

SiteWise

Super Suggestions for
Libraries

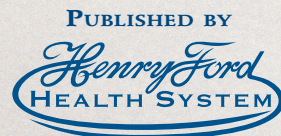
The Big Four Tips for Optimizing Access

Maximize
Lighting

Minimize
GLARE

Maximize
CONTRAST

Maximize
SIZE

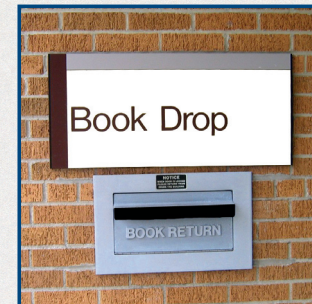
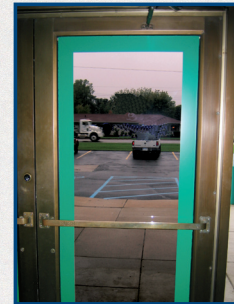


HENRY FORD CENTER FOR VISION REHABILITATION AND RESEARCH

SPONSORED BY
COMMUNITY FOUNDATION FOR SOUTHEAST MICHIGAN

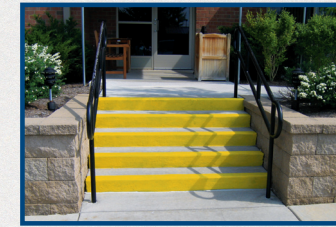
Entrance

- Post hours in high contrast large print
- Outline glass doors, door dividers, handicap buttons, book drops with contrasting tape or paint



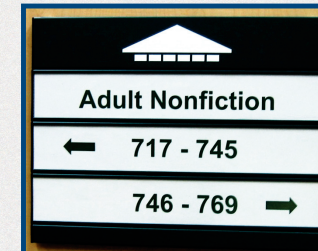
Outside Walkways

- Paint edges of steps, curbs, slants and crosswalks yellow; access areas blue
- Mark freestanding objects, railings with yellow tape or paint



Aisles and Signage

- Mark freestanding signs, step stools with contrasting tape
- Print all signs in high contrast large print



Excellent Resources to Offer

- Information on Library of Congress Large Print and Talking Books (www.loc.gov/nls)
- Provide informational handouts in high contrast large print
- Offer a list of local support groups; even better, start one!

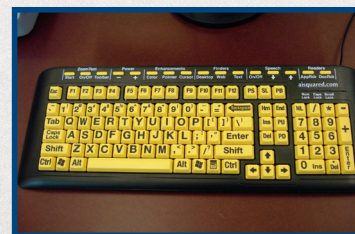
Employee and Volunteer Education

Alert staff to:

- The large and growing number of adults with vision loss
- The invisibility of central vision loss; people with macular degeneration, e.g. do not look like they have impaired vision
- The accessibility options on library computers
- Resources including Library of Congress Large Print and Talking Book Program and Detroit Radio Information Service (DRIS)
- The need for clear communication, including specific verbal directions: "A few feet ahead on your right, on the top shelf" instead of "Over there"

Equipment

- Position all screens away from glare
- Equip a computer with large print, high contrast keyboard and accessibility features
- Provide a video magnifier (CCTV) on an accessible table with large print instructions



Patterns of Vision Loss



MACULAR DEGENERATION

GLAUCOMA

DIABETES

STROKE

SiteWise

Super Suggestions for
Libraries

WHY Use SiteWise?

BECAUSE:

- Seniors are the fastest growing customer base in the U.S. and many seniors have reduced vision
- Following these few, easy inexpensive tips can keep your seniors patrons safe and happy and help them use your services

Your senior patrons and their families will be grateful for your thoughtfulness in instituting these easy suggestions.

SiteWise is a consulting service of the Henry Ford Center for Vision Rehabilitation and Research. SiteWise Super Suggestions for Libraries is provided with generous support from the Community Foundation for Southeast Michigan.

For more information, please call the Center at (313) 824-2401 or email visionrehab@hfhs.org.

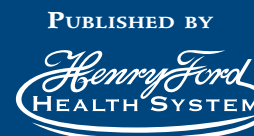
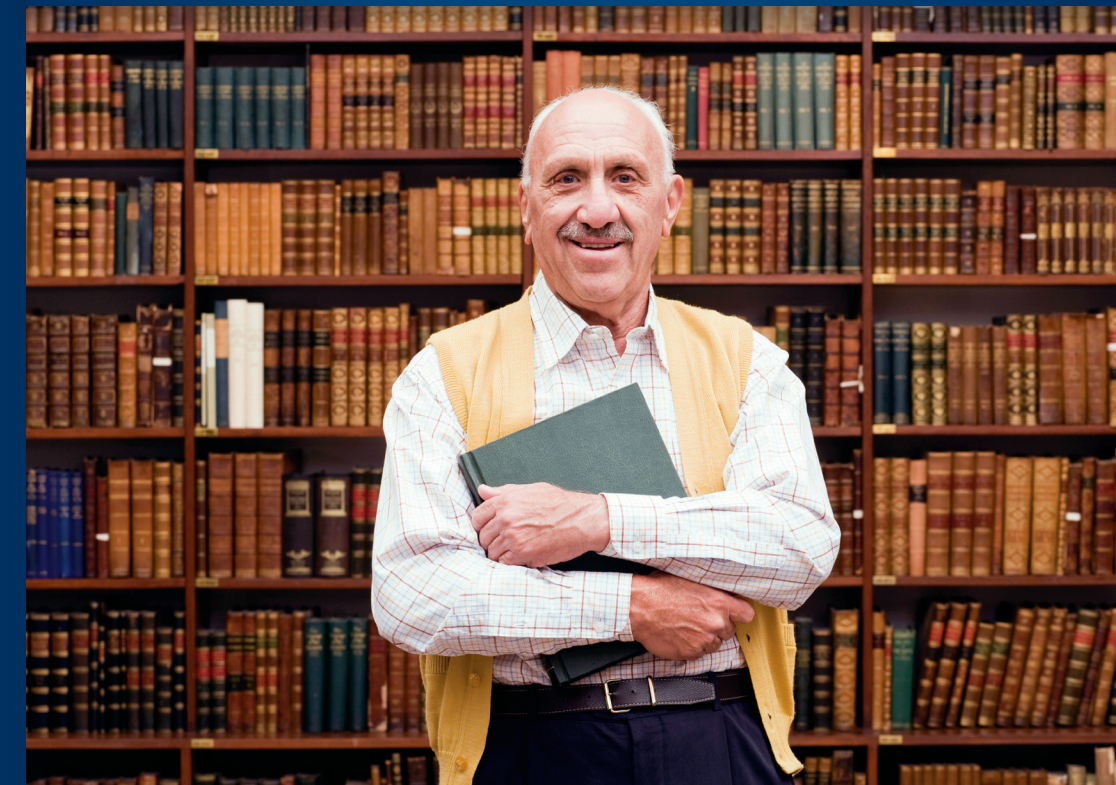


CENTER FOR VISION REHABILITATION AND RESEARCH
DEPARTMENT OF OPHTHALMOLOGY

29200 Schoolcraft
Livonia, MI 48150



SiteWise



HENRY FORD CENTER FOR VISION REHABILITATION AND RESEARCH

SPONSORED BY
COMMUNITY FOUNDATION FOR SOUTHEAST MICHIGAN