

# SiteWise

Super Suggestions for  
Community Centers

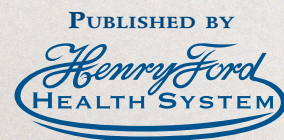
## The Big Four Tips for Optimizing Access

Maximize  
Lighting

Minimize  
GLARE

Maximize  
CONTRAST

Maximize  
SIZE

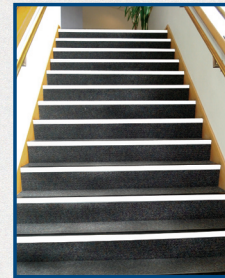


HENRY FORD CENTER FOR VISION REHABILITATION AND RESEARCH

SPONSORED BY  
COMMUNITY FOUNDATION FOR SOUTHEAST MICHIGAN

### Entrance, Elevators and Stairs

- Outline glass doors, handicap access buttons with high contrast tape
- Post hours in high contrast large print
- Contrast elevator doors from walls
- Mark stairs and railings with high contrast color



### Activity Rooms

- Gooseneck lamps for crafts, cards
- Reduce glare with window coatings, vertical blinds, table position
- Large print bingo and playing cards
- Hands-free magnifiers for crafts
- Dark lined sign-in sheets, dark pen
- High contrast labels on craft bins



### Signage and Clocks

- Use high contrast large print
- Use large, high contrast clocks



### Hallways and Restrooms

- Provide good lighting in all areas
- Mark freestanding objects with tape



### Outside Walkways

- Paint edges of steps, curbs and slants yellow; access areas blue
- Mark freestanding objects, railings with yellow tape or paint



### Supplies You May Need

- Gooseneck lamps
- Roll of colored tape
- Yellow and blue paint
- Large print playing cards
- Large print bingo cards
- Large clocks

### Excellent Resources to Offer

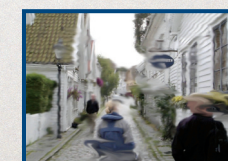
- Information on Library of Congress Large Print and Talking Books ([www.loc.gov/nls](http://www.loc.gov/nls))
- Provide a list of low vision support groups or start one at your center
- Print all informational handouts in high contrast large print

### Employee and Volunteer Education

*Alert staff to:*

- The large and growing number of adults with vision loss
- The invisibility of central vision loss; people with macular degeneration, e.g. do not look like they have impaired vision
- The need for clear communication, including specific verbal directions: "A few feet ahead on your right" instead of "Over there"

### Patterns of Vision Loss



MACULAR DEGENERATION

GLAUCOMA

DIABETES

STROKE

# SiteWise

Super Suggestions for  
Community Centers

## WHY Use SiteWise?

### BECAUSE:

- Seniors are the fastest growing customer base in the U.S. and many seniors have reduced vision
- Following these few easy, inexpensive tips can keep senior patrons safe and happy and help them use your services

*Your senior patrons and their families will be grateful for your thoughtfulness in instituting these easy suggestions.*

SiteWise is a consulting service of the Henry Ford Center for Vision Rehabilitation and Research. SiteWise Super Suggestions for Community Centers is provided with generous support from the Community Foundation for Southeast Michigan.

For more information, please call the Center at (313) 824-2401 or email [visionrehab@hfhs.org](mailto:visionrehab@hfhs.org).



CENTER FOR VISION REHABILITATION AND RESEARCH  
DEPARTMENT OF OPHTHALMOLOGY

29200 Schoolcraft  
Livonia, MI 48150



# SiteWise

Super Suggestions for  
Community Centers



PUBLISHED BY  
HENRY FORD CENTER FOR VISION REHABILITATION AND RESEARCH

SPONSORED BY  
COMMUNITY FOUNDATION FOR SOUTHEAST MICHIGAN